

## **Linde E16H-02**

**Capacity:** 1600 kg

**Mast type:** Triplex

**Lift height:** 4625 mm

**YOM:** 2018

**Running hours:** 7945

**Engine type:** Electric

**Tech. Condition:** good

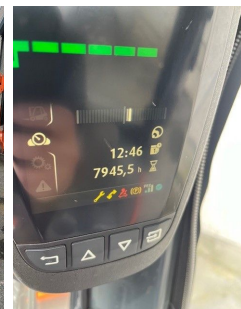
**Visual condition:** very good

### **Extras:**

Side Shift 3rd valve Overhead guard Front screen

**Com Nr.:** IH00352

**Battery:** HOPPECKE, 2018, 48V, 60 - 80%



**Price: on request** (Subject to prior sale)