

Linde E20PH-02

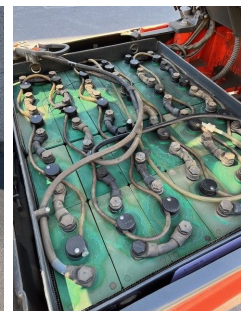
Capacity: 2000 kg
Mast type: Triplex
Lift height: 5470 mm
YOM: 2019
Running hours: 10425
Engine type: Electric
Tech. Condition: good
Visual condition: good

Com Nr.: IH00358

Battery: HOPPECKE, 2019, 48V, 775Ah, 60 - 80%

Extras:

Side Shift 3rd valve 4th valve Front screen



Price: on request (Subject to prior sale)